

ROMAN MEADOWS

~

WINTERTON



ROMAN MEADOWS

~

WINTERTON

Keigar Homes is back in Winterton with a stunning development of 135 homes ranging from 2-5 bedrooms, and including several 2 bedroom bungalows.

With 4.5 acres of public open space on site, and nestled between Simon's Wood and the open countryside, Roman Meadows will be one of our greenest developments to date.







WINTERTON AND NORTH LINCOLNSHIRE

Winterton is a small rural town of about 5,000 people, situated approximately half way between Barton upon Humber and Scunthorpe. Winterton is home to good primary and secondary schools, as well as various shops and tearooms catering for most local needs.

Nearby Barton, Hull and Scunthorpe are home to all the amenities you could require, with bustling high streets, leisure facilities and restaurants. All are within half an hour's drive, and each can be reached by the regular bus service that runs through Winterton.

5 minutes to the North is neighbouring Winteringham, home to North Lincolnshire's only Michelin Star restaurant - Winteringham Fields. 5 minutes to the South-West, sitting in 117 stunning acres of mature woodland and parkland lies Normanby Hall Golf Club.

North Lincolnshire is ideal for country walks, with an abundance of picturesque rural landscape to explore and many charming villages to visit.

ROMAN MEADOWS

Winterton has a long history going back to Roman times, with several large mosaics among the many discoveries that have been made here over the years. One of the largest and most impressive of these mosaics can be found on display in the reception area of Pittwood House, Scunthorpe.

The design for Roman Meadows is sympathetic to its surroundings, and features elevations built from a combination of stone and rustic bricks in keeping with some of the handsome local architecture.

At the North of the development is a large public open space with views over the Lincolnshire landscape all the way to the iconic Humber Bridge. Dog walkers and nature enthusiasts can explore Simon's Wood which adjoins the site to the East, and a wide range of local amenities can be easily accessed in the heart of the village, which is just a few minutes to the South-West.



DEVELOPMENT LAYOUT

Roman Meadows



Ancholme
3 bedroom semi-detached home

Buckingham
5 bedroom detached home

Canterbury
3 bedroom semi-detached home

Chatsworth
4 bedroom detached home

Duchess
5 bedroom detached home

Granary
4 bedroom mid-mews home

Kingston
4 bedroom detached home

Haywood
4 bedroom home

Malvern
2 bedroom semi-detached home

Miller
3 bedroom home

Teal
2 bedroom bungalow

Wordsworth
3 bedroom detached home



sales@keigarhomes.co.uk
01652 631939

HOW TO FIND US

Roman Meadows

North Street, Winterton, North Lincolnshire
DN15 9QN



Winterton Junior School - 0.2 miles
Winterton Community Academy - 0.4 miles
Scunthorpe Train Station - 6 miles
Hull City Centre - 15 miles
Humberside Airport - 15 miles
Cleethorpes Seafront - 31 miles
Leeds Bradford Airport - 75 miles



Pictures for illustration purposes only and do not represent any particular plot

THE MALVERN

2 bedroom semi-detached house



Pictures for illustration purposes only and do not represent any particular plot



Bedrooms 2



Bathrooms 1



Reception Rooms 1

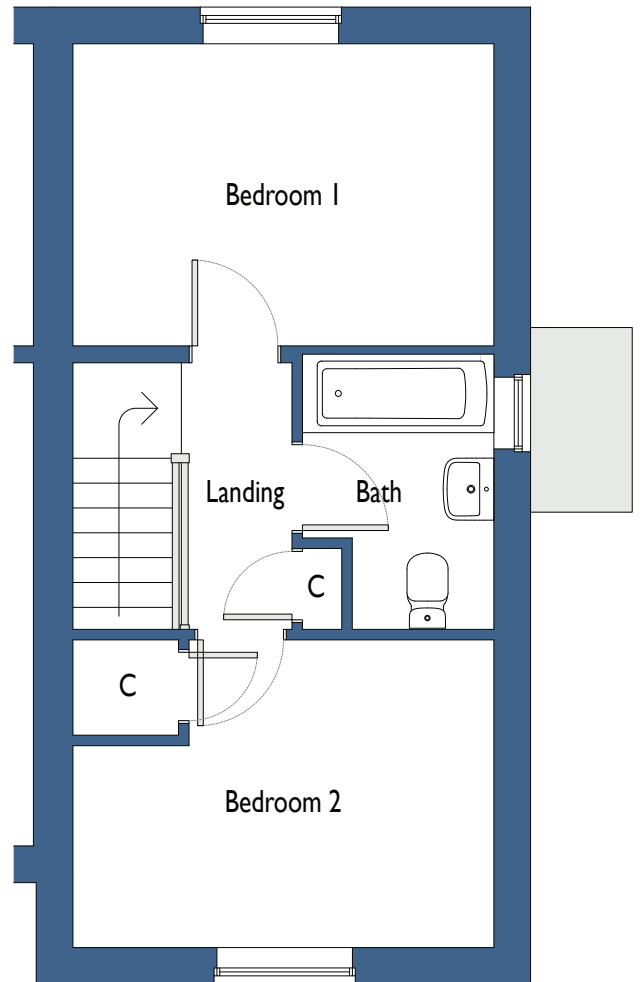
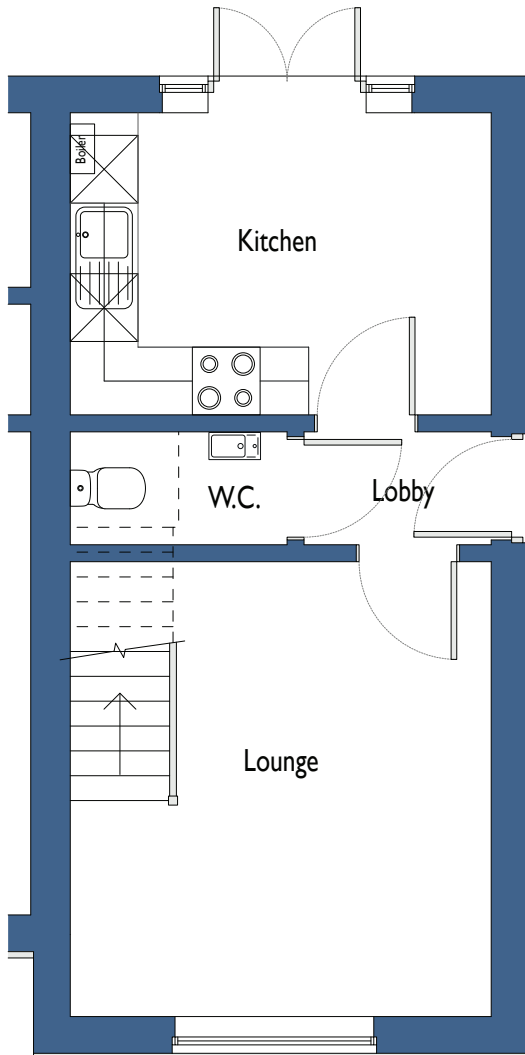


Parking Spaces 1-2



THE MALVERN

2 bedroom semi-detached house



ROOM DIMENSIONS

Lounge	4.02m x 3.72m	(13'2" x 12'2")
Kitchen	3.72m x 2.67m	(12'2" x 8'9")
Bedroom 1	3.72m x 2.67m	(12'2" x 8'9")
Bedroom 2	3.72m x 2.72m	(12'2" x 8'11")

Whilst these floor plans have been prepared with all due care for the convenience of the intending purchaser, the information is provided as a preliminary guide and may vary. Ask a Sales Advisor for further details on specific homes. Layouts provide approximate measurements only. Dimensions are for guidance only and are not intended to be used for carpet sizes, appliance space or items of furniture. Bathroom and kitchen layouts are indicative only and are subject to change. The information contained within this document does not constitute part of any offer, contract or warranty.

THE CANTERBURY

3 bedroom semi-detached house



Pictures for illustration purposes only and do not represent any particular plot



Bedrooms 3



Bathrooms 2



Reception Rooms 2



Parking Spaces 2

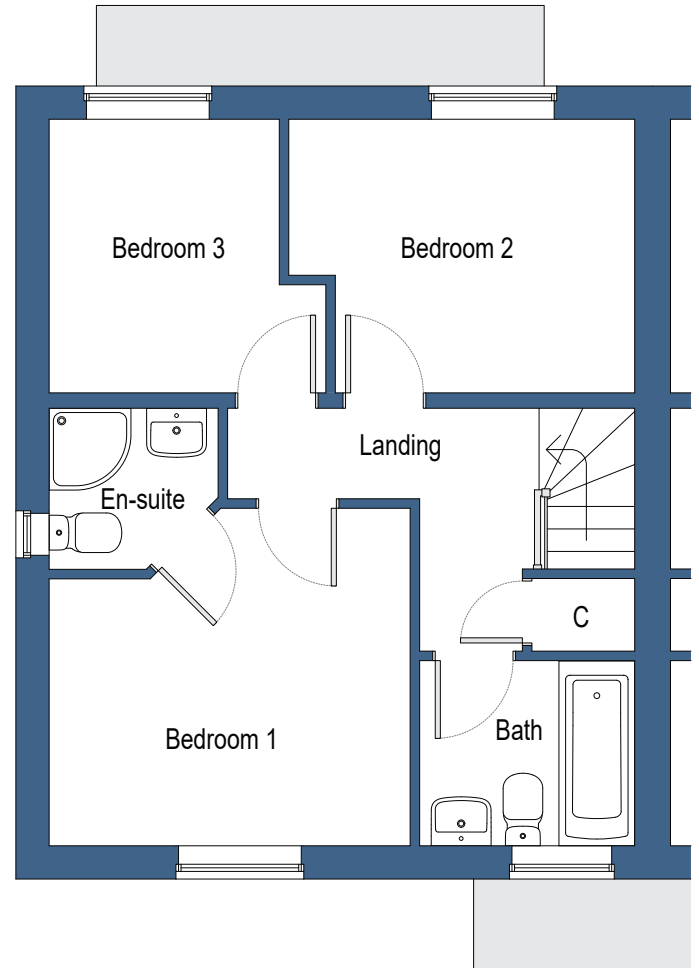
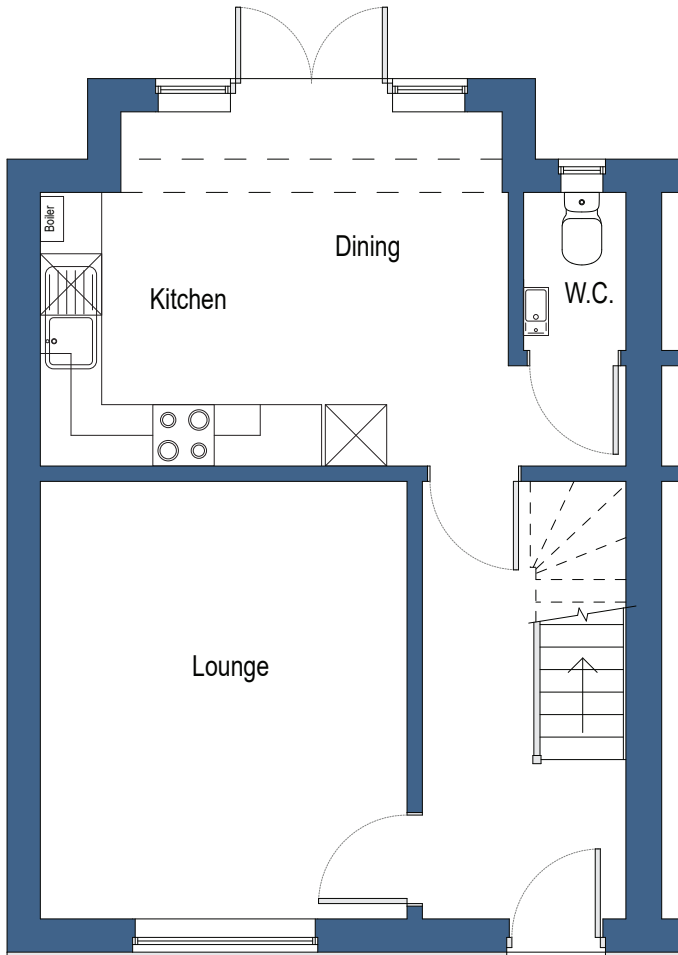


Detached Garage (see pricelist)



THE CANTERBURY

3 bedroom semi-detached house



ROOM DIMENSIONS

Lounge	4.27m x 3.6 m	(14' x 11'10")
Kitchen/ Dining	4.57m x 3.46m	(14'12" x 11'4")
Bedroom 1	3.53m x 3.30m	(11'7" x 10'10")
Bedroom 2	3.41m x 2.67m	(11'2" x 8'9")
Bedroom 3	2.67m x 2.25m	(8'9" x 7'5")

Whilst these floor plans have been prepared with all due care for the convenience of the intending purchaser, the information is provided as a preliminary guide and may vary. Ask a Sales Advisor for further details on specific homes. Layouts provide approximate measurements only. Dimensions are for guidance only and are not intended to be used for carpet sizes, appliance space or items of furniture. Bathroom and kitchen layouts are indicative only and are subject to change. The information contained within this document does not constitute part of any offer, contract or warranty.

THE ANCHOLME

3 bedroom semi-detached house



Pictures for illustration purposes only and do not represent any particular plot



Bedrooms 3



Bathrooms 2



Reception Rooms 2



Parking Spaces 2

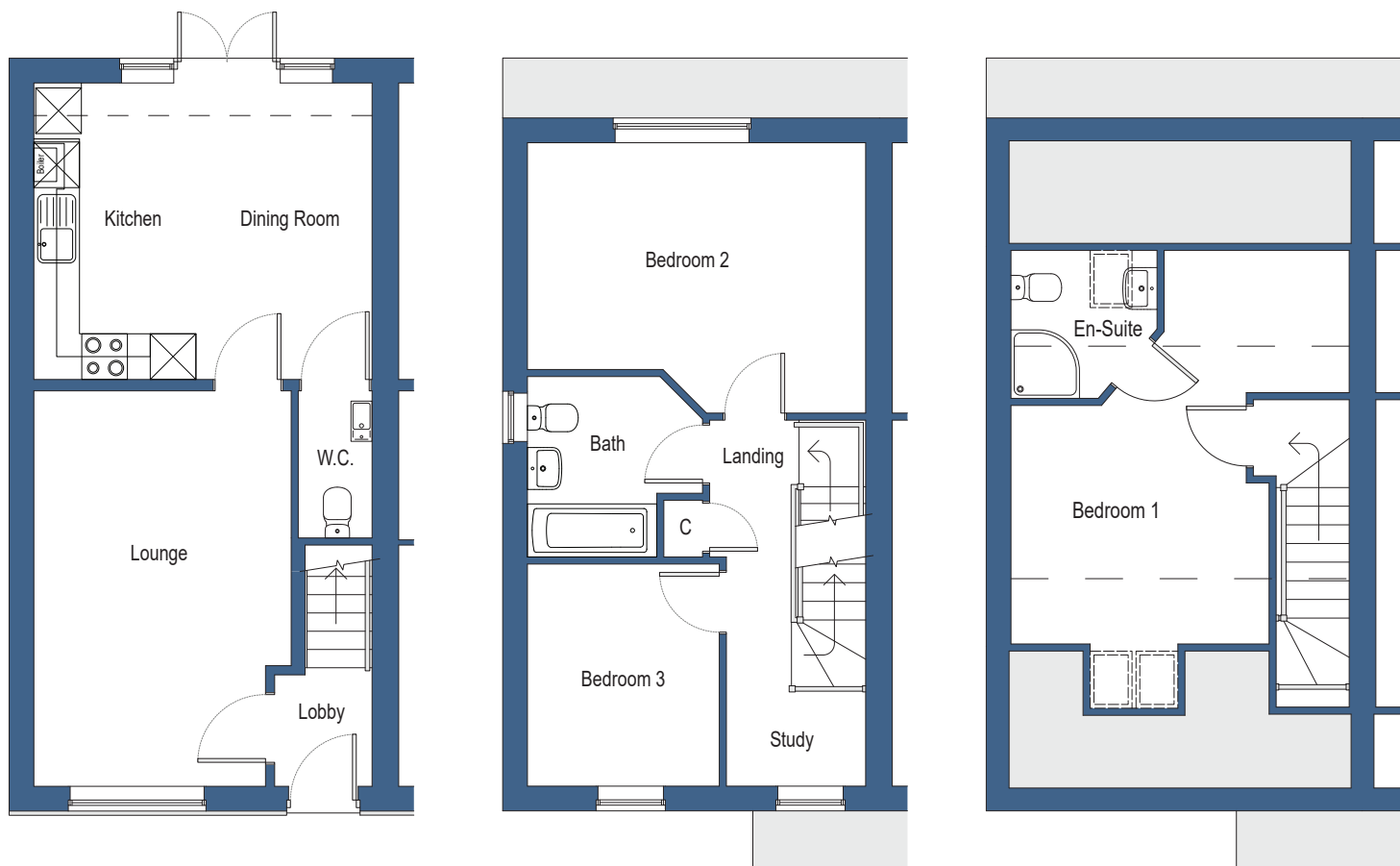


Detached Garage (see pricelist)



THE ANCHOLME

3 bedroom semi-detached house



ROOM DIMENSIONS

Lounge	5.19m x 3.38m	(17' x 11'1")
Kitchen	4.44m x 3.89m	(14'7" x 12'9")
Bedroom 1	5.17m x 3.39m	(16'12" x 11'1")
Bedroom 2	4.44m x 3.55m	(14'7" x 11'8")
Bedroom 3	2.91m x 2.52m	(9'7" x 8'3")

Whilst these floor plans have been prepared with all due care for the convenience of the intending purchaser, the information is provided as a preliminary guide and may vary. Ask a Sales Advisor for further details on specific homes. Layouts provide approximate measurements only. Dimensions are for guidance only and are not intended to be used for carpet sizes, appliance space or items of furniture. Bathroom and kitchen layouts are indicative only and are subject to change. The information contained within this document does not constitute part of any offer, contract or warranty.

THE WORDSWORTH

3 bedroom detached house



Pictures for illustration purposes only and do not represent any particular plot



Bedrooms 3



Bathrooms 2



Reception Rooms 2



Parking Spaces 2

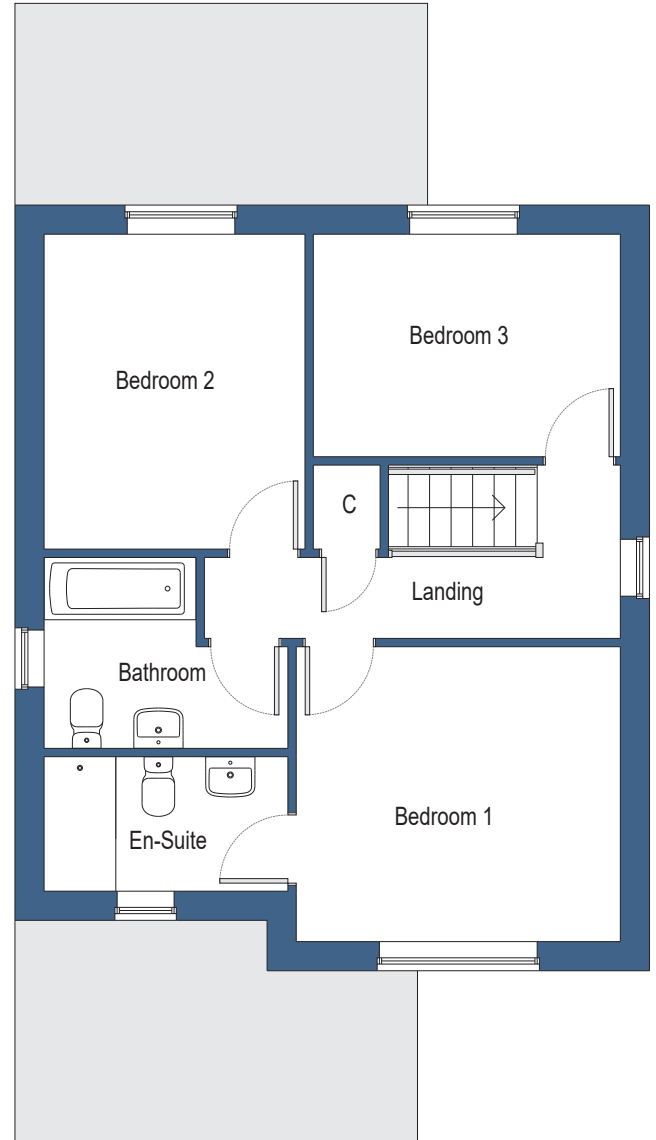
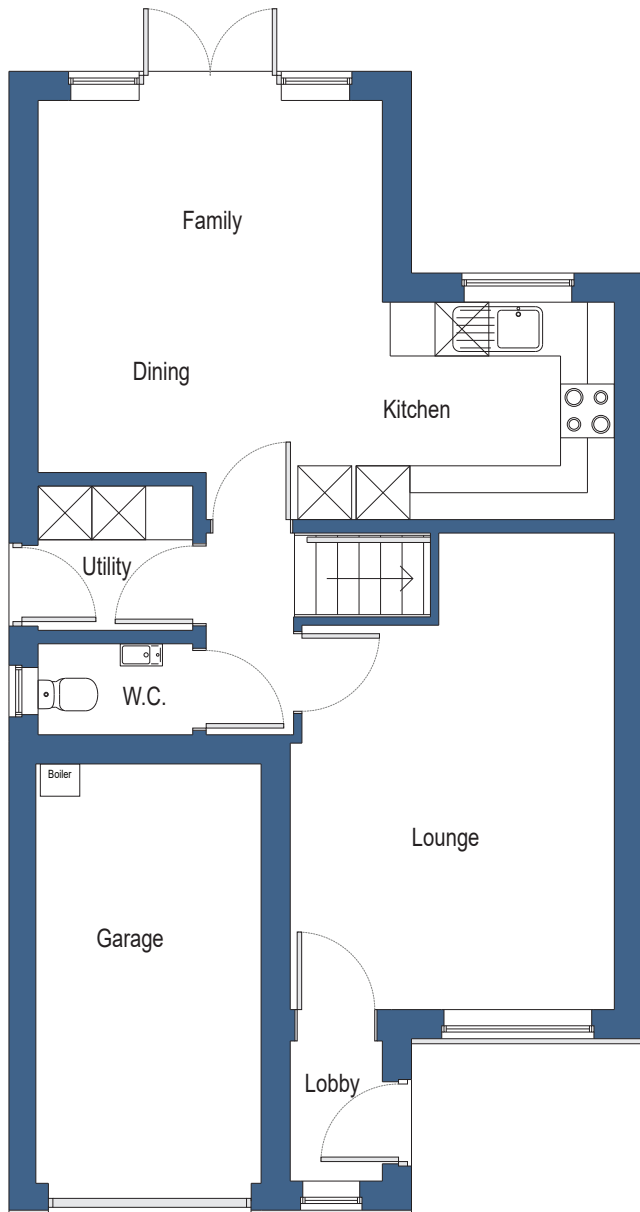


Integral Garage



THE WORDSWORTH

3 bedroom detached house



ROOM DIMENSIONS

Lounge	5.31m x 3.61m	(17'5" x 11'10")
Kitchen	3.58m x 2.42m	(11'9" x 7'11")
Family/ Dining	4.15m x 3.84m	(13'7" x 12'7")
Bedroom 1	3.61m x 3.28m	(11'10" x 10'9")
Bedroom 2	3.51m x 2.91m	(11'6" x 9'7")
Bedroom 3	3.42m x 2.48m	(11'3" x 8'2")

Whilst these floor plans have been prepared with all due care for the convenience of the intending purchaser, the information is provided as a preliminary guide and may vary. Ask a Sales Advisor for further details on specific homes. Layouts provide approximate measurements only. Dimensions are for guidance only and are not intended to be used for carpet sizes, appliance space or items of furniture. Bathroom and kitchen layouts are indicative only and are subject to change. The information contained within this document does not constitute part of any offer, contract or warranty.

THE HAYWOOD

4 bedroom semi-detached house



Bedrooms 4



Bathrooms 2



Reception Rooms 2



Parking Spaces 2

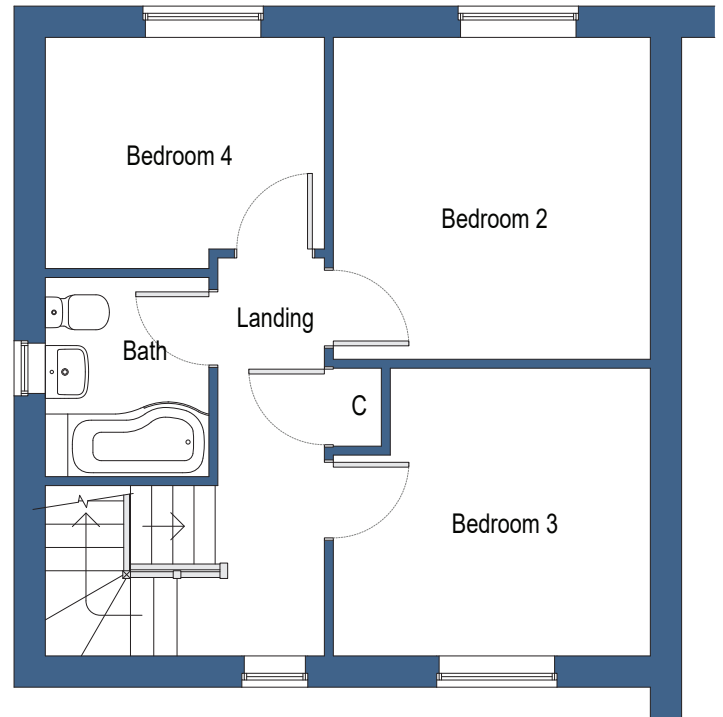
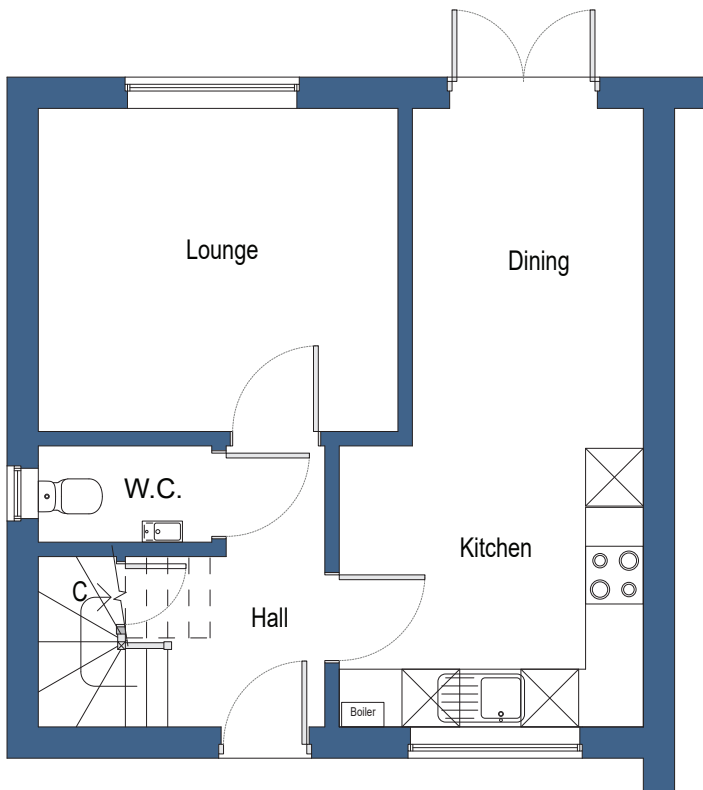


Detached Garage (see pricelist)



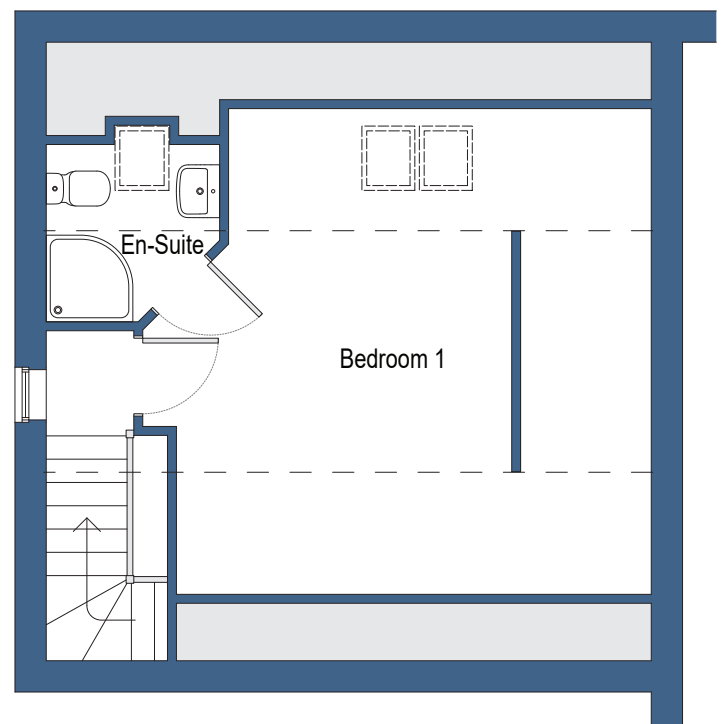
THE HAYWOOD

4 bedroom semi-detached house



ROOM DIMENSIONS

Lounge	3.72m x 3.35m	(12'3" x 10'12")
Kitchen	3.16m x 2.92m	(10'4" x 9'7")
Dining	3.50m x 2.41m	(11'6" x 7'11")
Bedroom 1	5.04m x 4.95m	(16'6" x 16'3")
Bedroom 2	3.34m x 3.29m	(10'11" x 10'10")
Bedroom 3	3.99m x 2.7m	(9'10" x 8'10")
Bedroom 4	2.91m x 2.4m	(9'7" x 7'10")



Whilst these floor plans have been prepared with all due care for the convenience of the intending purchaser, the information is provided as a preliminary guide and may vary. Ask a Sales Advisor for further details on specific homes. Layouts provide approximate measurements only. Dimensions are for guidance only and are not intended to be used for carpet sizes, appliance space or items of furniture. Bathroom and kitchen layouts are indicative only and are subject to change. The information contained within this document does not constitute part of any offer, contract or warranty.

THE HAYWOOD

4 bedroom detached house



Pictures for illustration purposes only and do not represent any particular plot



Bedrooms 4



Bathrooms 2



Reception Rooms 2



Parking Spaces 2

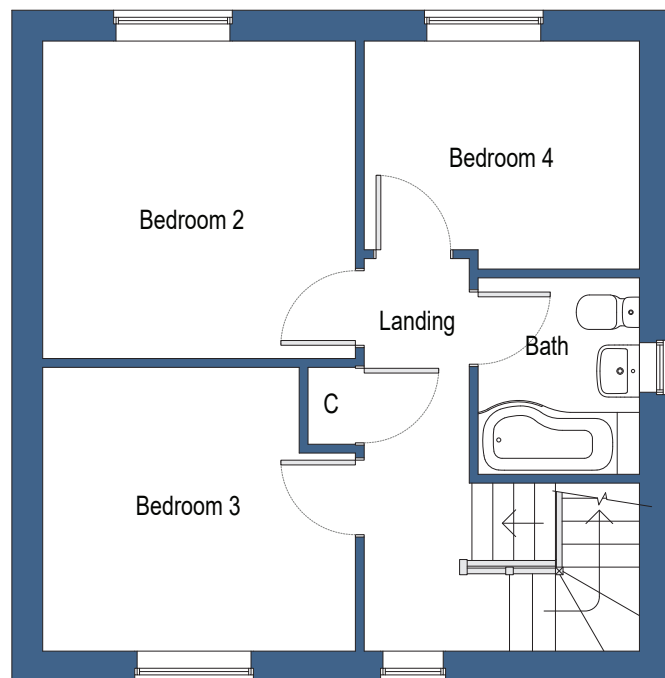
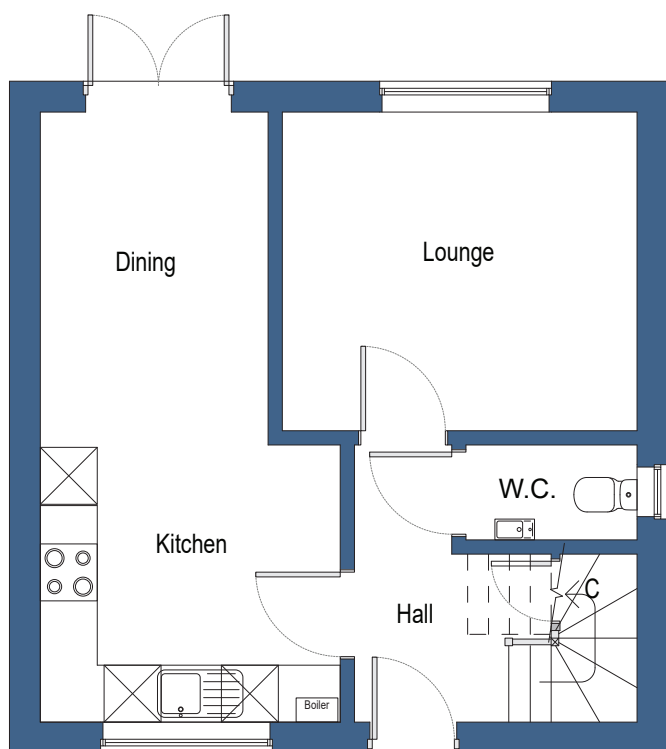


Detached Garage (see pricelist)



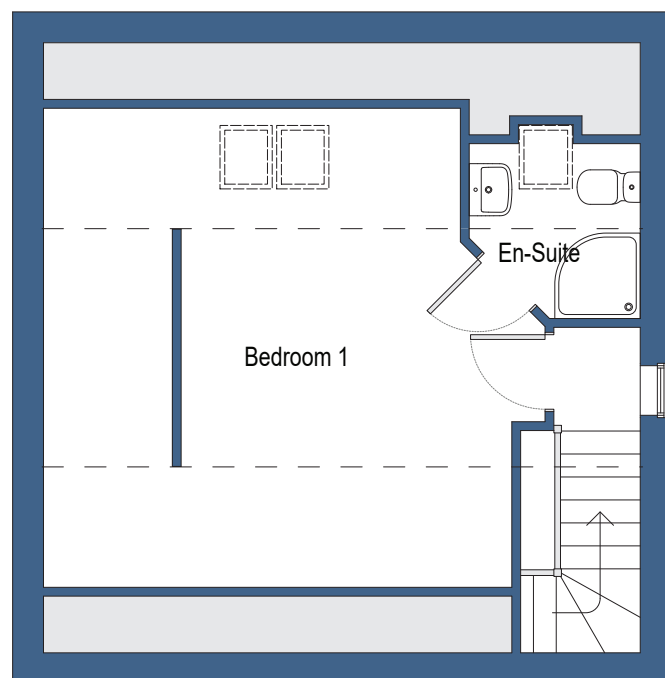
THE HAYWOOD

4 bedroom detached house



ROOM DIMENSIONS

Lounge	3.72m x 3.35m	(12'3" x 10'12")
Kitchen	3.16m x 2.92m	(10'4" x 9'7")
Dining	3.50m x 2.41m	(11'6" x 7'11")
Bedroom 1	5.04m x 4.95m	(16'6" x 16'3")
Bedroom 2	3.34m x 3.29m	(10'11" x 10'10")
Bedroom 3	3.99m x 2.7m	(9'10" x 8'10")
Bedroom 4	2.91m x 2.4m	(9'7" x 7'10")



Whilst these floor plans have been prepared with all due care for the convenience of the intending purchaser, the information is provided as a preliminary guide and may vary. Ask a Sales Advisor for further details on specific homes. Layouts provide approximate measurements only. Dimensions are for guidance only and are not intended to be used for carpet sizes, appliance space or items of furniture. Bathroom and kitchen layouts are indicative only and are subject to change. The information contained within this document does not constitute part of any offer, contract or warranty.

THE KINGSTON

4 bedroom detached house



Pictures for illustration purposes only and do not represent any particular plot



Bedrooms 4



Bathrooms 2



Reception Rooms 2



Parking Spaces 2



Integral Garage



THE KINGSTON

4 bedroom detached house



ROOM DIMENSIONS

Lounge	4.72m x 3.36m	(15'6" x 11')
Kitchen/ Dining	6.32m x 3.93m	(20'9" x 12'11")
Family	3.39m x 3.02m	(11'1" x 9'11")
Bedroom 1	4.27m x 3.36m	(14' x 11')
Bedroom 2	3.77m x 3.59m	(12'4" x 11'9")
Bedroom 3	3.64m x 2.89m	(11'11" x 9'6")
Bedroom 4	3.01m x 2.41m	(9'11" x 7'11")

Whilst these floor plans have been prepared with all due care for the convenience of the intending purchaser, the information is provided as a preliminary guide and may vary. Ask a Sales Advisor for further details on specific homes. Layouts provide approximate measurements only. Dimensions are for guidance only and are not intended to be used for carpet sizes, appliance space or items of furniture. Bathroom and kitchen layouts are indicative only and are subject to change. The information contained within this document does not constitute part of any offer, contract or warranty.

THE CHATSWORTH

4 bedroom detached house



Pictures for illustration purposes only and do not represent any particular plot



Bedrooms 4



Bathrooms 2



Reception Rooms 3



Parking Spaces 2

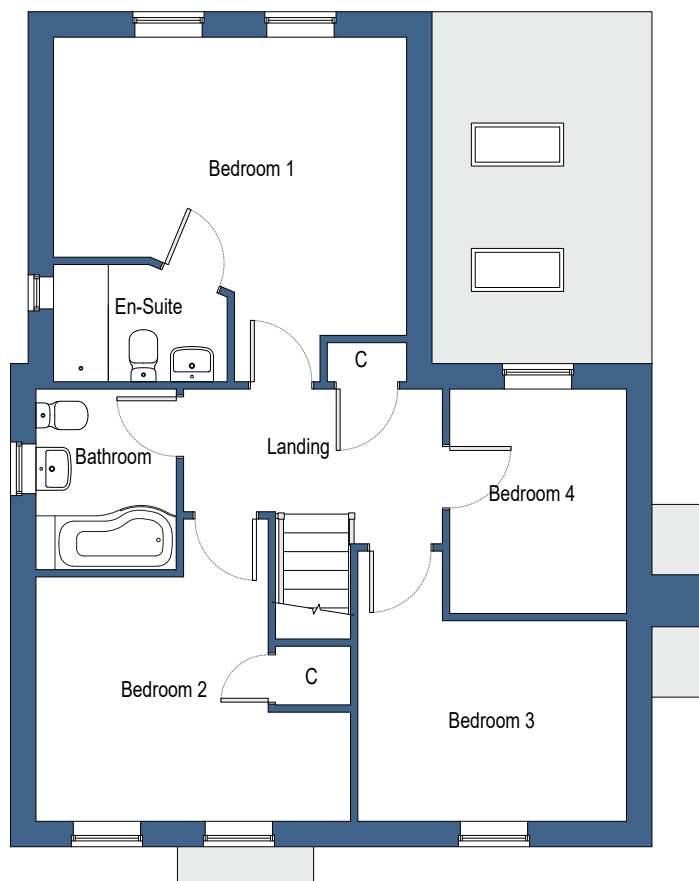
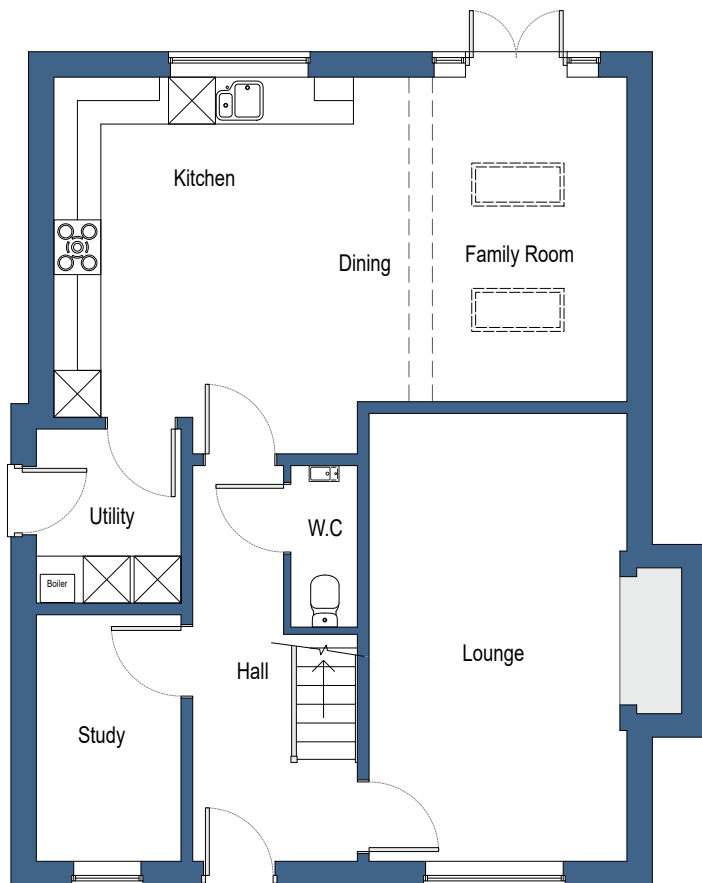


Detached Garage (see pricelist)



THE CHATSWORTH

4 bedroom detached house



ROOM DIMENSIONS

Lounge	5.71m x 3.29m	(18'9" x 10'10")
Kitch/Dining/Fam	7.32m x 4.35m	(24' x 14'3")
Study	3.15m x 1.85m	(10'4" x 6'1")
Bedroom 1	4.51m x 3.81m	(14'10" x 12'6")
Bedroom 2	4.10m x 3.12m	(13'5" x 10'3")
Bedroom 3	3.35m x 2.56m	(10'12" x 8'5")
Bedroom 4	2.87m x 2.26m	(9'5" x 7'5")

Whilst these floor plans have been prepared with all due care for the convenience of the intending purchaser, the information is provided as a preliminary guide and may vary. Ask a Sales Advisor for further details on specific homes. Layouts provide approximate measurements only. Dimensions are for guidance only and are not intended to be used for carpet sizes, appliance space or items of furniture. Bathroom and kitchen layouts are indicative only and are subject to change. The information contained within this document does not constitute part of any offer, contract or warranty.

THE DUCHESS

5 bedroom detached house



Pictures for illustration purposes only and do not represent any particular plot



Bedrooms 5



Bathrooms 3



Reception Rooms 3



Parking Spaces 2

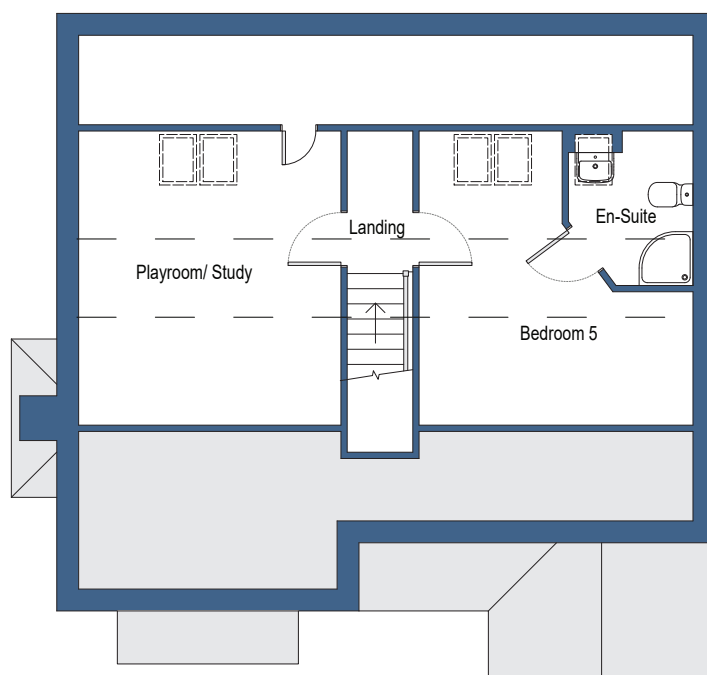
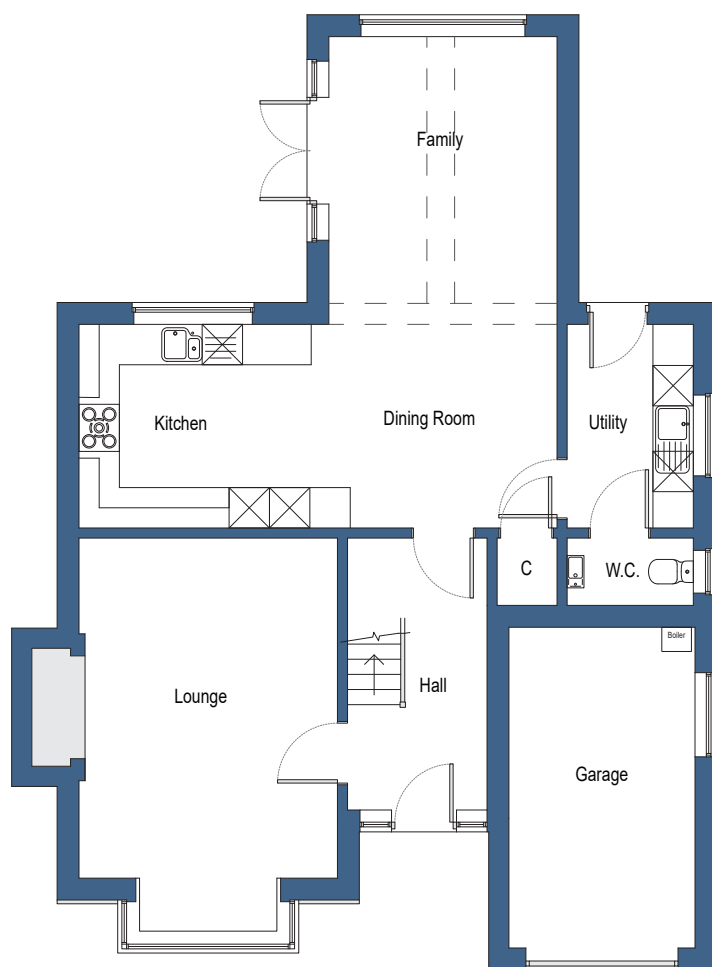


Integral Garage



THE DUCHESS

5 bedroom detached house



ROOM DIMENSIONS

Lounge	5.05m x 3.84m	(16'7" x 12'7")
Kitchen/ Dining	7.10m x 3.02m	(23'4" x 9'11")
Family	4.25m x 3.39m	(13'11" x 11'1")
Bedroom 1	5.10m x 3.84m	(16'9" x 12'7")
Bedroom 2	4.07m x 2.96m	(13'4" x 9'9")
Bedroom 3	3.12m x 3.02m	(10'3" x 9'11")
Bedroom 4	3.05m x 2.96m	(10' x 9'9")
Bedroom 5	4.37m x 4.06m	(14'4" x 13'4")
Playroom/ Study	4.37m x 3.89m	(14'4" x 12'9")

Whilst these floor plans have been prepared with all due care for the convenience of the intending purchaser, the information is provided as a preliminary guide and may vary. Ask a Sales Advisor for further details on specific homes. Layouts provide approximate measurements only. Dimensions are for guidance only and are not intended to be used for carpet sizes, appliance space or items of furniture. Bathroom and kitchen layouts are indicative only and are subject to change. The information contained within this document does not constitute part of any offer, contract or warranty.

THE BUCKINGHAM

5 bedroom detached house



Pictures for illustration purposes only and do not represent any particular plot



Bedrooms 5



Bathrooms 3



Reception Rooms 4



Parking Spaces 2

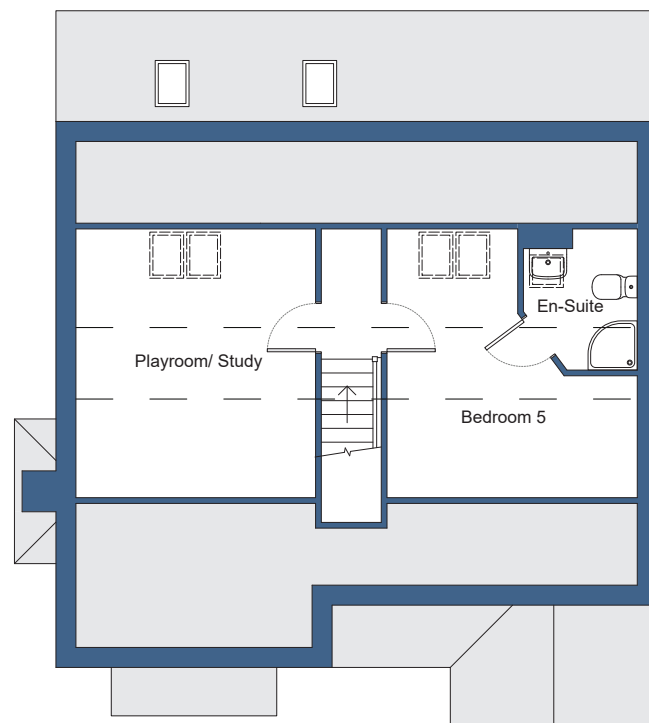
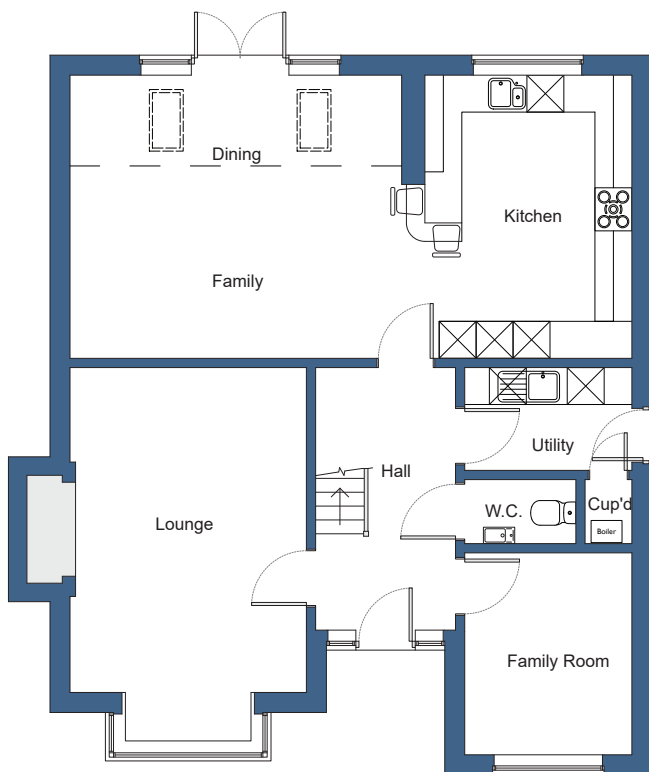


Detached Garage



THE BUCKINGHAM

5 bedroom detached house



ROOM DIMENSIONS

Lounge	5.27m x 3.84m	(17'3" x 12'7")
Family/ Dining	5.36m x 4.60m	(17'7" x 15'1")
Kitchen	4.60m x 3.38m	(15'1" x 11'1")
Family Room	3.28m x 2.71m	(10'9" x 8'11")
Bedroom 1	5.10m x 3.84m	(16'9" x 12'7")
Bedroom 2	4.07m x 2.96m	(13'4" x 9'9")
Bedroom 3	3.12m x 3.02m	(10'3" x 9'11")
Bedroom 4	3.05m x 2.96m	(10' x 9'9")
Bedroom 5	4.37m x 4.06m	(14'4" x 13'4")
Playroom/ Study	4.37m x 3.89m	(14'4" x 12'9")

Whilst these floor plans have been prepared with all due care for the convenience of the intending purchaser, the information is provided as a preliminary guide and may vary. Ask a Sales Advisor for further details on specific homes. Layouts provide approximate measurements only. Dimensions are for guidance only and are not intended to be used for carpet sizes, appliance space or items of furniture. Bathroom and kitchen layouts are indicative only and are subject to change. The information contained within this document does not constitute part of any offer, contract or warranty.

THE TEAL

2 bedroom detached bungalow



Pictures for illustration purposes only and do not represent any particular plot



Bedrooms 2



Bathrooms 1



Reception Rooms 2



Parking Spaces 2

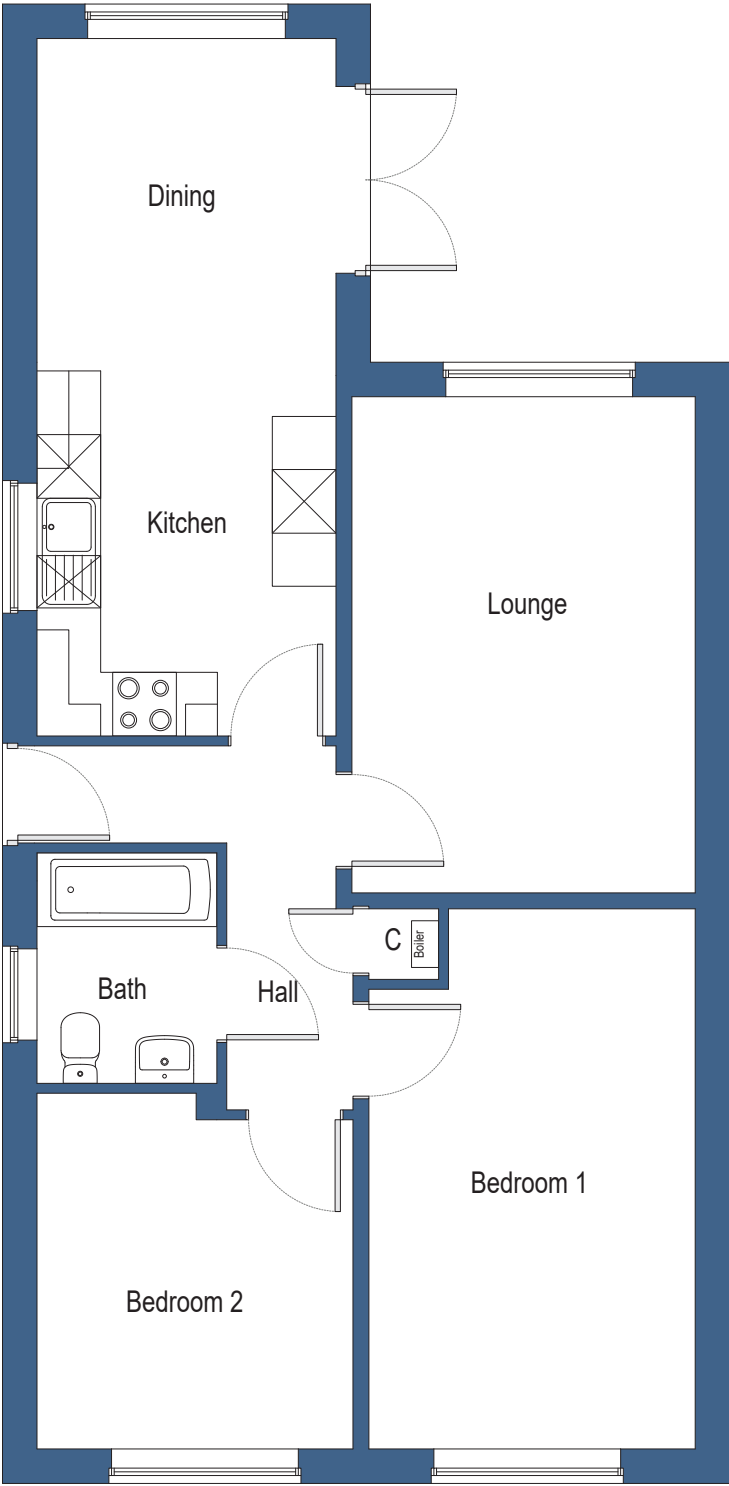


Detached Garage (see pricelist)



THE TEAL

2 bedroom detached bungalow



ROOM DIMENSIONS

Lounge	4.67m x 3.23m	(15'4" x 10'7")
Kitchen/ Dining	6.57m x 2.81m	(21'7" x 9'3")
Bedroom 1	5.09m x 3.07m	(16'8" x 10'1")
Bedroom 2	3.35m x 2.97m	(10'12" x 9'9")

Whilst these floor plans have been prepared with all due care for the convenience of the intending purchaser, the information is provided as a preliminary guide and may vary. Ask a Sales Advisor for further details on specific homes. Layouts provide approximate measurements only. Dimensions are for guidance only and are not intended to be used for carpet sizes, appliance space or items of furniture. Bathroom and kitchen layouts are indicative only and are subject to change. The information contained within this document does not constitute part of any offer, contract or warranty.

THE GRANARY

PLOT 2

4 bedroom mid-mews barn



Bedrooms 4



Bathrooms 3



Reception Rooms 2



Parking Spaces 2



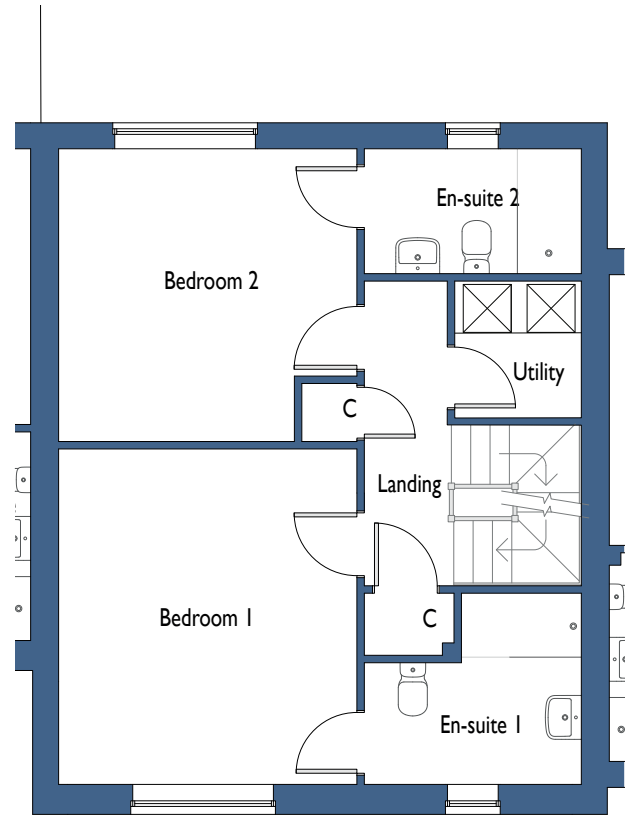
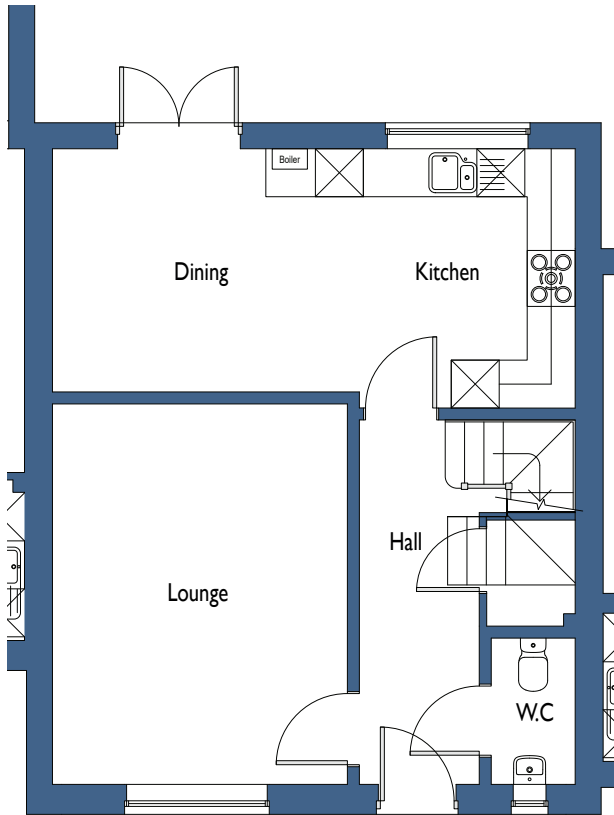
Detached Garage (see pricelist)



THE GRANARY

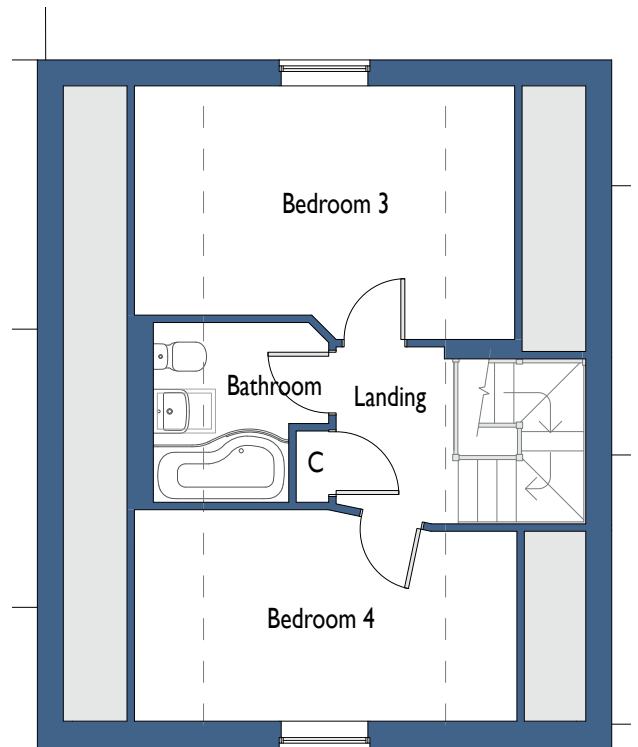
PLOT 2

4 bedroom mid-mews barn



ROOM DIMENSIONS

Lounge	4.76m x 3.69m	(15'7" x 12'1")
Kitchen/ Dining	6.54m x 3.04m	(21'5" x 9'12")
Bedroom 1	4.19m x 3.73m	(13'9" x 12'3")
Bedroom 2	3.72m x 3.66m	(12'3" x 12')
Bedroom 3	4.76m x 3.87m	(15'7" x 9'5")
Bedroom 4	4.78m x 2.64m	(15'8" x 8'8")



Whilst these floor plans have been prepared with all due care for the convenience of the intending purchaser, the information is provided as a preliminary guide and may vary. Ask a Sales Advisor for further details on specific homes. Layouts provide approximate measurements only. Dimensions are for guidance only and are not intended to be used for carpet sizes, appliance space or items of furniture. Bathroom and kitchen layouts are indicative only and are subject to change. The information contained within this document does not constitute part of any offer, contract or warranty.

THE MILLER

PLOT 3

3 bedroom semi detached barn



Bedrooms 3



Bathrooms 2



Reception Rooms 2



Parking Spaces 2



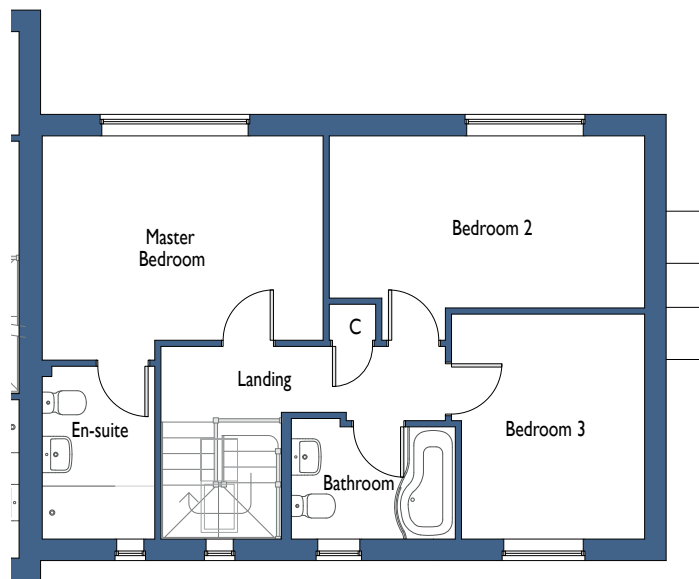
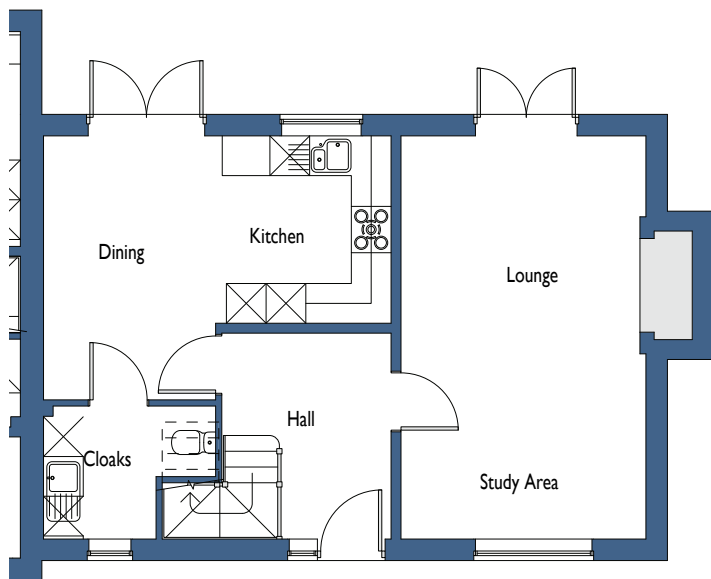
Detached Garage (see pricelist)



THE MILLER

PLOT 3

3 bedroom semi detached barn



ROOM DIMENSIONS

Lounge	3.68m x 6.15m	(12'1" x 20'2")
Kitchen/ Dining	5.21m x 4.05m	(17'1" x 13'3")
Bedroom 1	4.24m x 3.15m	(13'11" x 10'4")
Bedroom 2	4.76m x 2.66m	(15'8" x 8'9")
Bedroom 3	2.91m x 3.39m	(9'7" x 11'2")

Whilst these floor plans have been prepared with all due care for the convenience of the intending purchaser, the information is provided as a preliminary guide and may vary. Ask a Sales Advisor for further details on specific homes. Layouts provide approximate measurements only. Dimensions are for guidance only and are not intended to be used for carpet sizes, appliance space or items of furniture. Bathroom and kitchen layouts are indicative only and are subject to change. The information contained within this document does not constitute part of any offer, contract or warranty.



Pictures for illustration purposes only and do not represent any particular plot

SAFE AS HOUSES

What we do to look after you

SAFETY & SECURITY

- Smoke alarms fitted on every floor.
- Electronic alarm system.
- Five-lever locks on front and back doors.
- Locks on every window.
- Door chain fitted where applicable.
- External lighting at the front and rear of every home.

AFTERCARE

- Dedicated customer care team during your initial 2 year warranty.
- All materials are sourced from reputable companies, and are fully guaranteed with backup support from the suppliers.
- 10 year LABC structural warranty.





From our family, for yours

When brothers Keith and Garry established Keigar Homes in 1994 the philosophy was simple: to build quality homes which feel special for the people who live in them, and to build a successful and sustainable business for the future. In both of these aspects they have succeeded, and today Keigar Homes thrives under the stewardship of Garry and his family.

Family values run right through the core of what we do, and many of our employees, partners and customers have been with us for many years.

In 2021 Keigar Homes was recognised for its longstanding commitment to quality by being awarded National 'Housebuilder of the Year' at the biennial Master Builder Awards.

Garry Whall
Managing Director

Nathan Whall
Director

Bradley Whall
Director

When you're ready for something special...



National
2021 Winner



Yorkshire and Trent
2023 Winner

